

W. BRANLY - P. LACAZE

SELARL de Géomètres-Experts Fonciers

Maine et Loire

Commune d'Allonnes

Rue Charles Baudelaire

Les Lisières

# PLAN DE BORNAGE DES LOTS

Echelle : 1/500

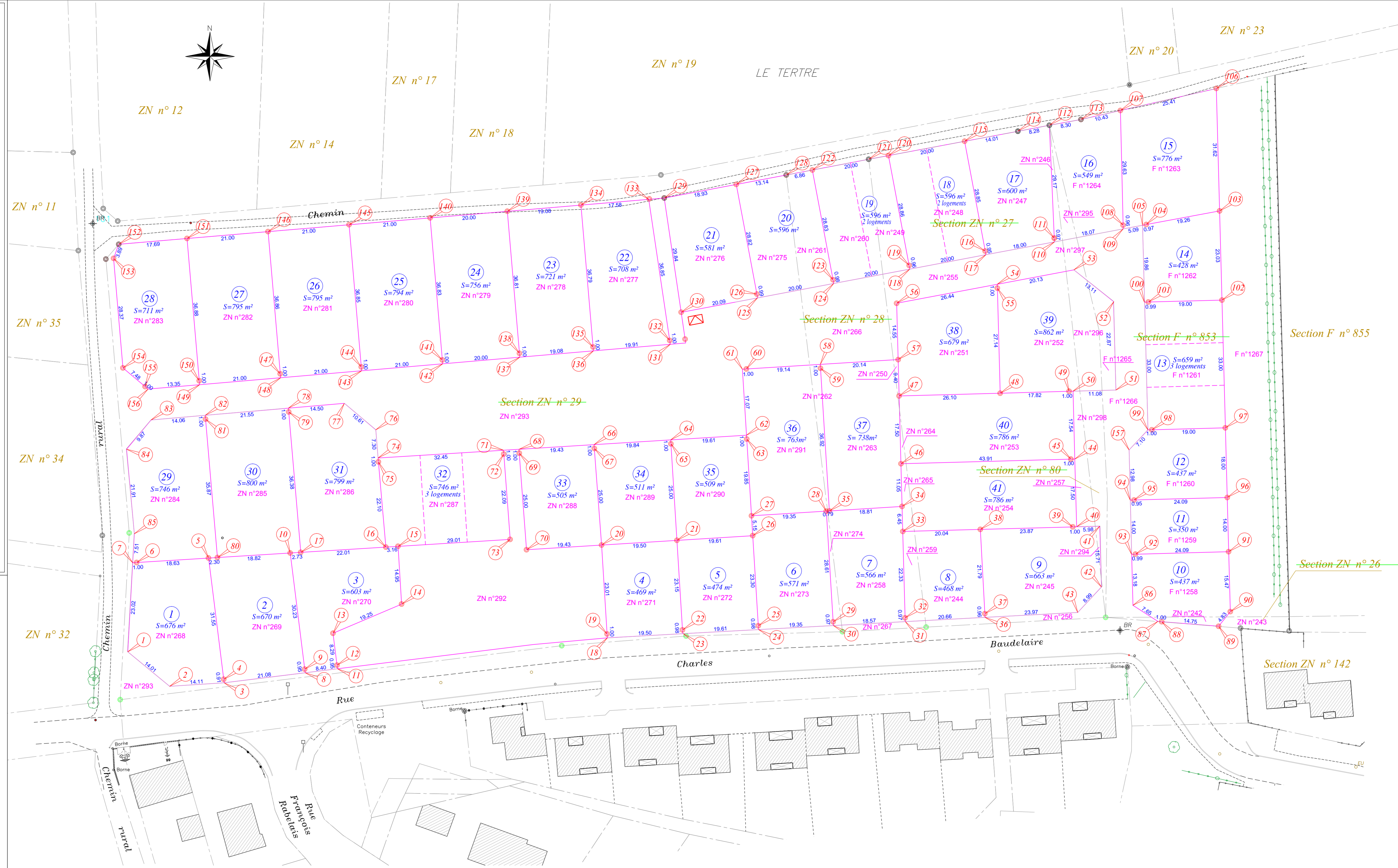
Coordonnées : indépendants

Date terrain : 19/05/2021  
Date édition : 08/06/2021  
Mis à jour : 01/12/2021  
Dossier n° 215058-LMN

## LEGENDE

- Clôture
- Application cadastrale non contradictoire
- Borne ancienne
- Borne ancienne disparue
- Borne nouvelle
- Clou d'arpentage
- limite de Lot
- Points de limite de lot

Nota : Les distances sont mesurées à l'horizontale



Coordonnées indépendantes			Coordonnées indépendantes		
Matricule	X (mètre)	Y (mètre)	Matricule	X (mètre)	Y (mètre)
1	4280.10	7532.23	81	4300.20	7592.31
2	4290.91	7523.33	82	4300.11	7593.30
3	4304.99	7524.23	83	4286.10	7592.10
4	4304.88	7525.13	84	4279.77	7584.54
5	4300.96	7556.43	85	4281.79	7562.72
6	4282.37	7555.28	86	4539.67	7544.23
7	4281.37	7555.22	87	4546.10	7540.09
8	4325.92	7526.80	88	4547.10	7540.01
9	4325.80	7527.74	89	4561.80	7538.83
10	4322.05	7557.73	90	4564.81	7542.61
11	4334.26	7527.84	91	4564.40	7558.07
12	4334.14	7528.79	92	4540.32	7557.43
13	4333.11	7537.01	93	4539.33	7557.40
14	4350.82	7544.53	94	4538.99	7571.40
15	4349.90	7559.46	95	4539.95	7571.43
16	4346.74	7559.26	96	4564.03	7572.07
17	4324.77	7557.90	97	4563.54	7590.06
18	4403.94	7535.83	98	4544.55	7589.56
19	4403.88	7536.82	99	4543.55	7589.53
20	4402.46	7559.79	100	4542.68	7622.52
21	4421.92	7561.00	101	4543.67	7622.54
22	4423.35	7537.89	102	4562.66	7623.05
23	4423.41	7536.92	103	4562.05	7646.08
24	4442.99	7537.97	104	4543.12	7642.55
25	4442.93	7538.95	105	4542.16	7642.37
26	4441.49	7562.21	106	4561.20	7677.68
27	4441.17	7567.35	107	4536.43	7672.01
28	4460.49	7568.55	108	4537.14	7642.39
29	4462.25	7539.99	109	4537.16	7641.43
30	4462.31	7539.02	110	4519.40	7638.08
31	4480.85	7540.01	111	4519.36	7639.04
32	4480.83	7540.98	112	4518.09	7668.19
33	4480.23	7563.31	113	4526.26	7669.68
34	4480.06	7569.76	114	4509.96	7666.64
35	4461.28	7568.59	115	4496.19	7664.05
36	4501.48	7541.13	116	4501.53	7635.70
37	4501.43	7542.08	117	4501.71	7634.76
38	4500.26	7563.84	118	4482.05	7631.05
39	4524.13	7564.48	119	4481.88	7632.00
40	4525.13	7564.51	120	4476.54	7660.36
41	4531.10	7564.67	121	4471.45	7659.40
42	4531.54	7548.96	122	4456.89	7656.63
43	4525.41	7542.39	123	4462.22	7628.29
44	4524.66	7582.00	124	4462.40	7627.34
45	4523.66	7581.97	125	4442.75	7623.62
46	4479.76	7580.80	126	4442.57	7624.59
47	4479.29	7598.29	127	4437.23	7652.91
48	4505.39	7598.99	128	4450.15	7655.34
49	4523.20	7599.50	129	4418.63	7649.41
50	4524.20	7599.53	130	4423.01	7619.89
51	4535.27	7599.81	131	4420.19	7611.63
52	4534.66	7622.67	132	4420.04	7612.62
53	4524.42	7630.85	133	4414.64	7649.07
54	4504.63	7627.12	134	4397.12	7647.58
55	4504.66	7626.12	135	4400.26	7610.92
56	4478.66	7622.23	136	4400.35	7609.93
57	4479.04	7607.69	137	4381.34	7608.30
58	4458.94	7606.44	138	4381.25	7609.29
59	4459.00	7605.45	139	4378.11	7645.97
60	4439.83	7605.26	140	4358.18	7644.28
61	4438.83	7605.20	141	4361.33	7607.59
62	4439.89	7588.16	142	4361.41	7606.59
63	4439.95	7587.16	143	4340.49	7604.79
64	4420.31	7586.95	144	4340.40	7605.79
65	4420.37	7585.95	145	4337.26	7642.50
66	4400.51	7585.72	146	4316.33	7640.73
67	4400.58	7584.73	147	4319.48	7604.00
68	4381.12	7584.52	148	4319.57	7603.00
69	4381.19	7583.53	149	4298.64	7601.21
70	4383.06	7558.59	150	4298.56	7602.20
71	4377.13	7584.28	151	4295.41	7638.95
72	4377.20	7583.28	152	4277.78	7637.46
73	4378.85	7561.25	153	4276.45	7633.80
74	4344.74	7582.27	154	4278.86	7605.53
75	4344.82	7581.28	155	4285.35	7600.07
76	4344.15	7589.55	156	4284.58	7600.71
77	4336.03	7596.38	157	4538.68	7584.37
78	4321.58	7595.15			
79	4321.67	7594.15			
80	4303.26	7556.57			